

North East High School

Graduation Requirements



- **Credits**

Students who remain at **North East High School** on a full time basis must successfully complete 27.0 credits in grades 9 – 12 as follows:

COURSE REQUIREMENTS	CREDITS
Mathematics <i>See page 12 for mathematics sequence</i>	4.0
English	4.0
Social Studies <i>See page 22 for Social Studies sequence</i>	4.0
Science - <i>biology is required</i>	4.0
Physical Education & Health	2.0
Electives*	9.0
Portfolio	Successful Completion
Total Credits	27.00

*Two credits of the required elective courses must be Arts and Humanities courses from any of the following departments: fine art, music, technology education, world language, family and consumer science, English and social studies. In addition students must take and pass Personal Keyboarding (0.5 credits).

Students who choose to attend the **Erie County Technical School** must successfully complete 24.0 credits in grades 9 – 12 as follows:

COURSE REQUIREMENTS	CREDITS
Mathematics <i>See page 12 for mathematics sequence</i>	3.0
English	4.0
Social Studies <i>See page 22 for Social Studies sequence</i>	3.0
Science <i>biology is required</i>	3.0
Physical Education & Health	2.0
ECTS Lab Credits	9.0 lab credits for 3 year tech graduates 6.0 lab credits for 2 year tech graduates 3.0 lab credits for 1 year tech graduates
Electives*	Varies based on tech schedule
Portfolio	Successful Completion
Total Credits	24.00

*Two credits of the required elective courses must be Arts and Humanities courses from any of the following departments: fine art, music, technology education, world language, family and consumer science, English and social studies. In addition students must take and pass Personal Keyboarding (0.5 credits).

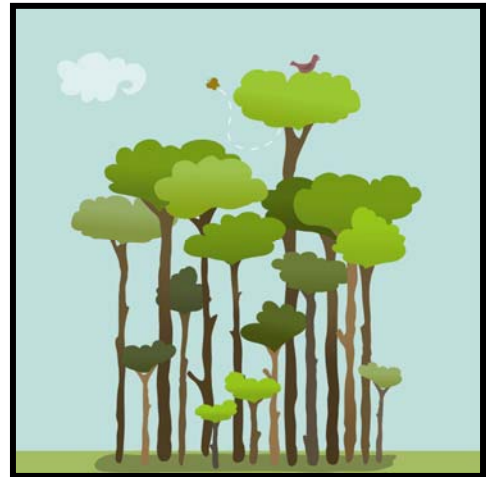
North East High School

Graduation Requirements

- ***Graduation Project (Portfolio)***

The Pennsylvania Department of Education requires all high school students to complete a culminating graduation project. North East High School's Graduation Project or Portfolio must be completed by the end of the student's senior year (usually in April). Each portfolio must include the following:

- I. Table of Contents
- II. Self-Assessment
- III. Goal Setting Plan and Summary
- IV. Academic Entries (2 entries in each discipline separated by time to show growth)
 - a. English
 - b. Social Studies
 - c. Mathematics
 - d. Science
 - e. Electives
- V. Career Exploration Entries
 - a. Resume
 - b. Cover Letter
- VI. Autobiography
- VII. Personal Choice Entries (optional)
 - a. College Application
 - b. Class Projects
 - c. Honors and Awards
 - d. Video/audio Tapes
 - e. Photographs



Students attending the Erie County Technical School will include in their portfolios the technical entries that span the three year program they have studied.

- ***Pennsylvania School System Assessment***

The Pennsylvania Department of Education requires demonstrated proficiency in reading, writing, mathematics and science on the Pennsylvania School System Assessment (PSSA) or attainment of standards through successful completion of coursework. On the high school level the PSSA is administered annually to juniors. All juniors must participate in the writing, reading, mathematics and science PSSA tests.

Promotion Requirements Grades 9 – 12

Promotion from one grade to the next depends upon credits earned. All full year courses are worth one credit; all semester courses are worth one-half credit. Students are expected to make yearly progress in their major academic subjects to ensure graduating in a timely fashion. Typically, students should follow these guidelines:

- From grade 9 to 10: A student must pass at least three of the four major subjects and earn at least 4.5 credits.
- From grade 10 to 11: A student must earn at least 11 credits.
- From grade 11 to 12: A student must earn at least 19 credits.

Students who fail to make yearly progress (as noted above) jeopardize the opportunity to graduate within four years.

North East High School

Graduation Requirements

Grading System

North East high School uses a letter grading system based upon the following percentages:

A = 93 – 100%	I = Incomplete
B = 85 – 92%	WP = Withdrawal while Passing
C = 77 – 84%	WF = Withdrawal while Failing
D = 69 – 76%	P = Passing
F = Below 69%	MX = Medical Excuse

Quarterly grades reflect increments of + or – the letter grade given. All final grades are given in whole letter grades only.

The final grade in all full year courses is the average of all four academic quarters (at a value of 22.5% each quarter), and the final exam (which carries a weight of 10%) to equal 100% of the grade.

If a student withdraws from a course for any reason prior to its completion, a grade of WP or WF will be given based upon actual academic progress in the course at the time of withdrawal. This grade will be reflected on the transcript.

Quality Point Average and Rank

Quality Point Average (QPA) is computed on a weighted scale, using letter grades earned in all courses in the high school. Quality Point Average determines a student's rank in class, is cumulative from year to year and appears on a student's transcript. Courses are assigned levels for QPA purposes as follows:

- Level 1: Regular and Basic Courses
- Level 2: Honor Courses
- Level 3: Advanced Placement and College courses (not to exceed seven credits)

The following point scale is used to compute QPA:

	A	B	C	D	F
Level 1	4.0	3.0	2.0	1.0	0
Level 2	5.0	4.0	3.0	1.0	0
Level 3	5.5	4.5	3.5	1.0	0



North East High School

Graduation Requirements

Course Failure

Students must pass all courses required for graduation to earn credit. If a student fails a course, the course may be repeated during the next school year or it may be remedial in an approved remediation program, either at North East School District or at another accredited school district. Course remediation requirements are as follows:

1.0 credit = 120 hours of instruction *Remediation must equal 60 hours of instruction*
0.5 credit = 60 hours of instruction *Remediation must equal 30 hours of instruction*

Students may be tutored privately to remediate failed coursework. Private tutors must be certified teachers approved by the principal. All financial arrangements for private tutoring take place directly between the student's family and the tutor. A formal signed statement indicating the subject, dates, and total hours of the actual remediation, outline of topics covered, and grade given, will be submitted to the principal at the conclusion of the coursework. The course, grade, and assigned credit will then be added to the student's transcript.

